

Please check the examination details below before entering your candidate information

Candidate surname					Other names			
Centre Number					Candidate Number			
Pearson Edexcel Level 1/Level 2 GCSE (9–1)					<input type="text"/> <input type="text"/> <input type="text"/> <input type="text"/> <input type="text"/>			
Monday 18 May 2020								
Morning (Time: 1 hour 30 minutes)					Paper Reference 1GB0/01			
Geography B Paper 1: Global Geographical Issues								
You must have: Calculator							Total Marks <input type="text"/>	

Instructions

- Use **black** ink or ball-point pen.
- **Fill in the boxes** at the top of this page with your name, centre number and candidate number.
- Answer **all** questions.
- Answer the questions in the spaces provided – *there may be more space than you need.*
- Where asked you must **show all your working out** with **your answer clearly identified** at the **end of your solution**.

Information

- The total mark for this paper is 94.
- The marks for **each** question are shown in brackets – *use this as a guide as to how much time to spend on each question.*
- The marks available for spelling, punctuation, grammar and use of specialist terminology are clearly indicated.

Advice

- Read each question carefully before you start to answer it.
- Try to answer every question.
- Check your answers if you have time at the end.

Turn over ►

P61879A

©2020 Pearson Education Ltd.

1/1/1/1/1/1/1




Pearson

SECTION A

Hazardous Earth

Answer ALL questions in this section.

Write your answers in the spaces provided.

Some questions must be answered with a cross in a box ☒. If you change your mind about an answer, put a line through the box ☒ and then mark your new answer with a cross ☒.

- 1 (a) Study Figure 1 which shows a plate boundary along the west coast of South America.

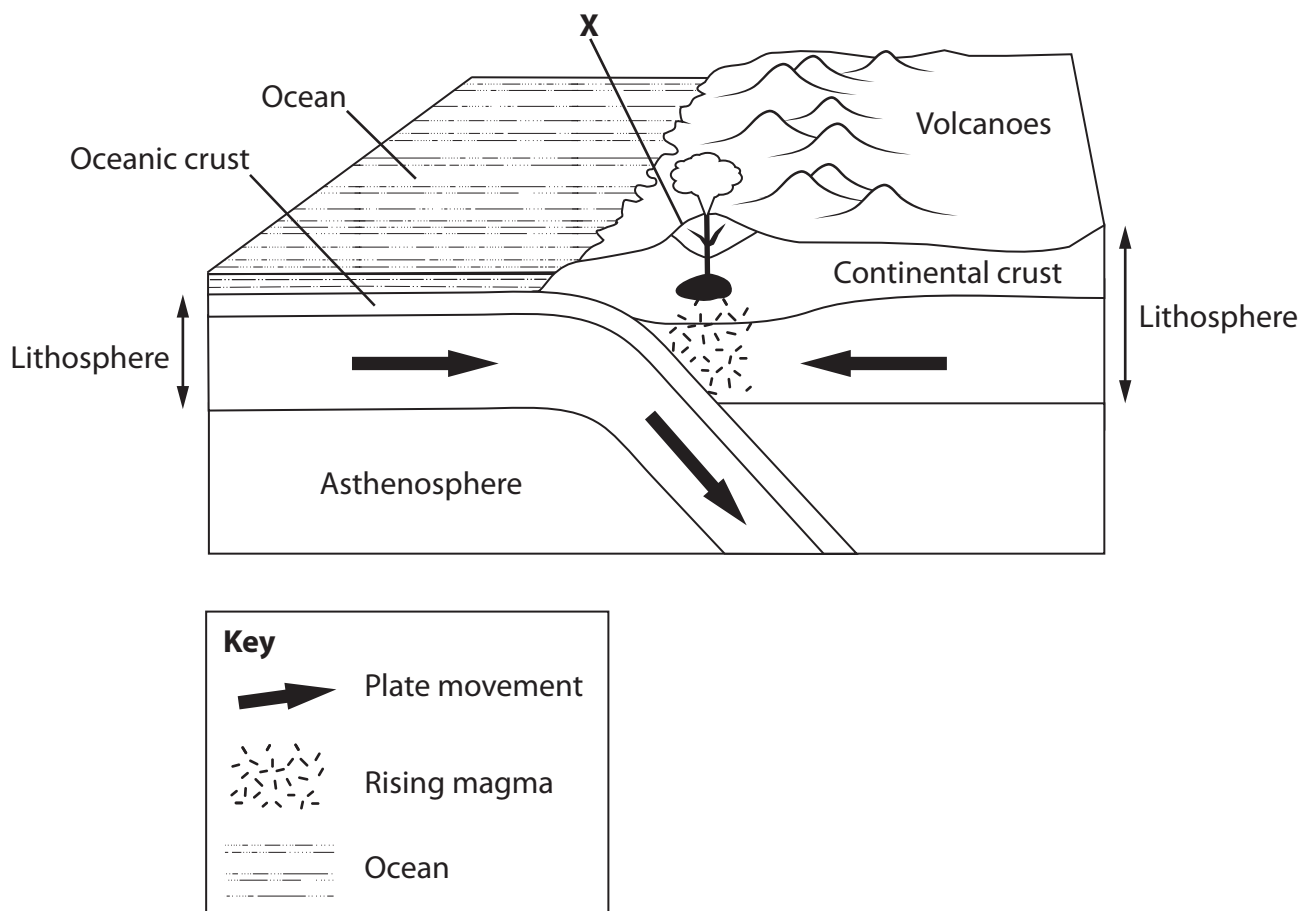


Figure 1

- (i) Identify the type of plate tectonic feature shown.

(1)

- A A divergent boundary
- B A hotspot
- C A convergent boundary
- D A conservative boundary



(ii) Name the type of volcano found at **X**.

(1)

.....

.....

(b) Explain **one** cause of tectonic plate movement.

(3)

.....

.....

.....

.....

.....

.....

DO NOT WRITE IN THIS AREA

DO NOT WRITE IN THIS AREA

DO NOT WRITE IN THIS AREA



(c) Study Figure 2 which shows the area of ice in the Arctic Ocean each spring between 1978 and 2018.

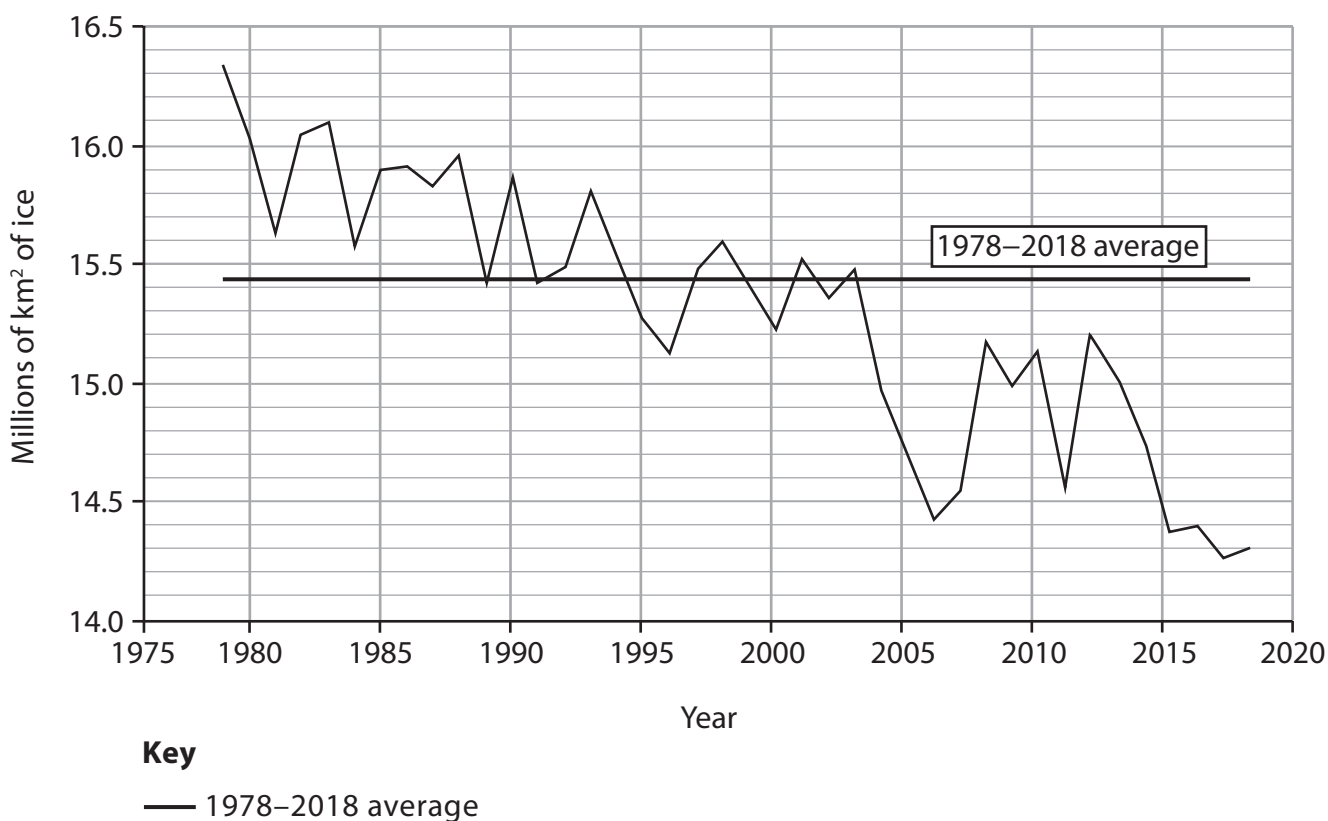


Figure 2

(i) Describe the trend in the area of Arctic ice between 1978 and 2018.

Use data in your answer.

(3)

.....

.....

.....

.....

.....

.....

.....

(ii) Identify **one** reason for the changing area of Arctic ice shown in Figure 2.

(1)

.....

.....



(iii) Explain **two** ways in which changes in the area of Arctic ice may have consequences for people.

(4)

1

.....

.....

2

.....

.....

.....

(d) Explain **one** piece of evidence of natural climate change.

(2)

.....

.....

.....

.....

DO NOT WRITE IN THIS AREA

DO NOT WRITE IN THIS AREA

DO NOT WRITE IN THIS AREA



P 6 1 8 7 9 A 0 5 2 8

(e) Study Figure 3 which shows sources of greenhouse gas emissions in the European Union for 1990 and 2018.

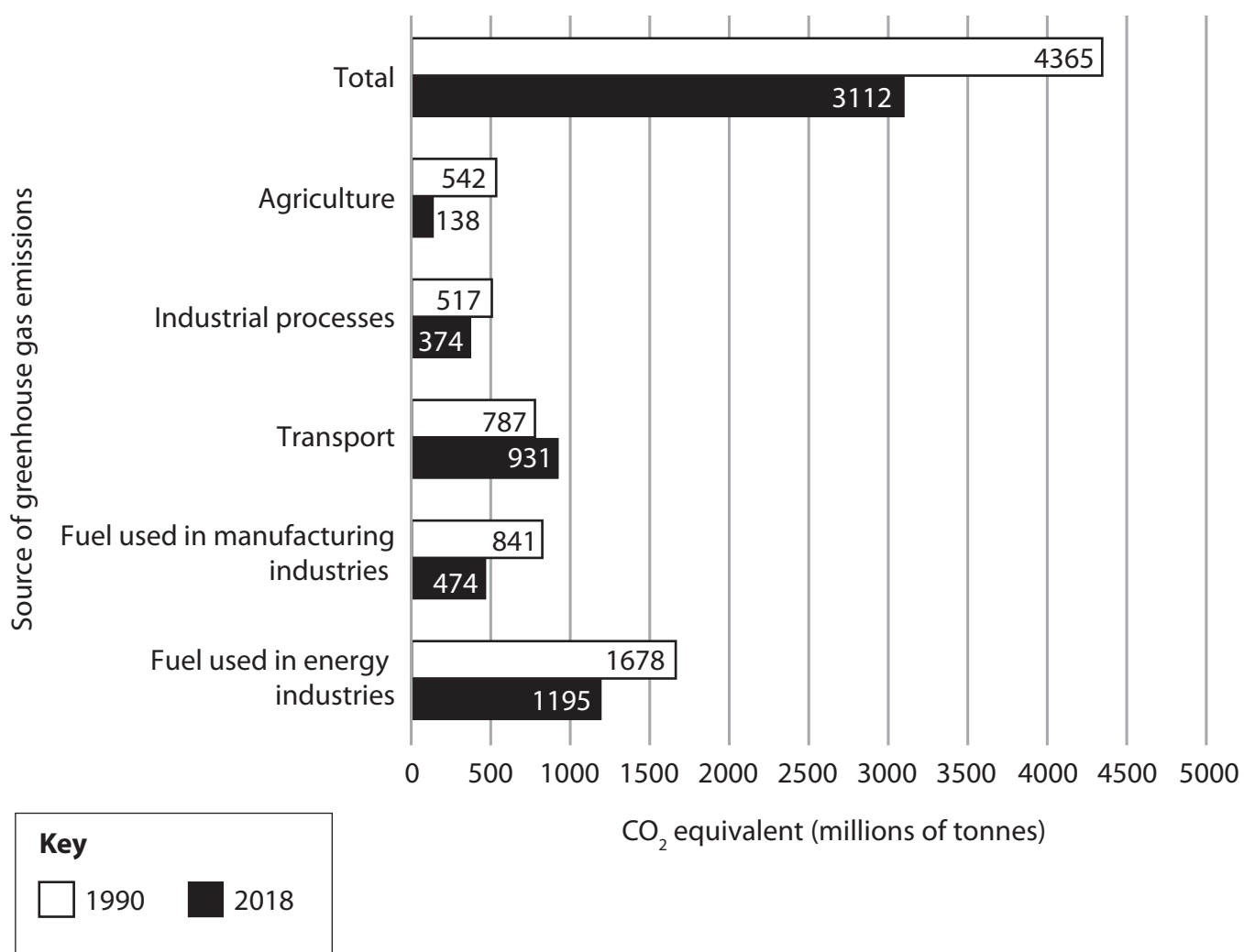


Figure 3

(i) Identify which human activity was producing the most greenhouse gas emissions in 2018.

(1)

- A** agriculture
- B** transport
- C** fuel used in manufacturing industries
- D** fuel used in energy industries



(ii) Calculate the percentage decrease in total emissions (CO₂ equivalent) between 1990 and 2018.

Give your answer to one decimal place.

Show your working below.

(2)

.....%

(f) Explain two reasons why tropical cyclones lose their energy.

(4)

1

.....

.....

.....

2

.....

.....

.....

DO NOT WRITE IN THIS AREA

DO NOT WRITE IN THIS AREA

DO NOT WRITE IN THIS AREA



(g) Assess the reasons why some countries are more vulnerable than others to the impacts of tropical cyclones.

(8)

Area with horizontal dotted lines for writing the answer.

DO NOT WRITE IN THIS AREA

DO NOT WRITE IN THIS AREA

DO NOT WRITE IN THIS AREA



DO NOT WRITE IN THIS AREA

DO NOT WRITE IN THIS AREA

DO NOT WRITE IN THIS AREA

(Total for Question 1 = 30 marks)

TOTAL FOR SECTION A = 30 MARKS



SECTION B

Development Dynamics

Answer ALL questions in this section.

Write your answers in the spaces provided.

Some questions must be answered with a cross in a box ☒. If you change your mind about an answer, put a line through the box ☒ and then mark your new answer with a cross ☒.

Spelling, punctuation, grammar and the use of specialist terminology will be assessed in 2(h).

2 (a) (i) Identify which **one** of the following is a definition of **maternal mortality rate**.

(1)

- A The annual number of deaths per 100 000 women whilst pregnant or in childbirth
- B The annual number of live births in a location per 1000 people
- C The annual number of deaths in a location per 1000 people
- D The annual number of children per 100 000 who die before their first birthday

(ii) Identify which one of the following is an economic measure of development.

(1)

- A death rate
- B infant mortality rate
- C life expectancy
- D Gross Domestic Product (GDP) per capita

(b) Explain **one** reason why fertility rates fall as countries develop.

(2)

.....

.....

.....

.....

DO NOT WRITE IN THIS AREA

DO NOT WRITE IN THIS AREA

DO NOT WRITE IN THIS AREA



DO NOT WRITE IN THIS AREA

DO NOT WRITE IN THIS AREA

DO NOT WRITE IN THIS AREA

(c) Study Figure 4 which shows the five stages of Rostow's modernisation theory.

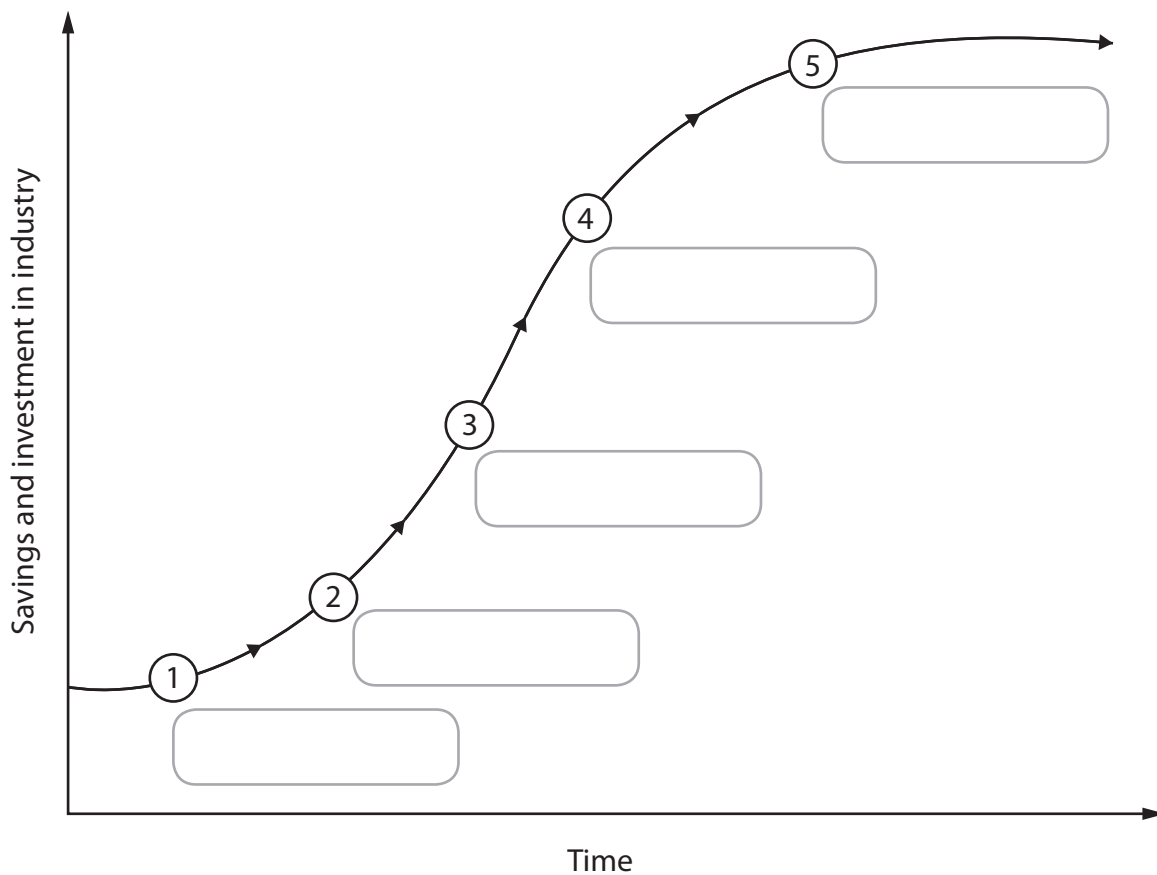


Figure 4

- (i) Label the **traditional society** stage of Rostow's modernisation theory on Figure 4. (1)
- (ii) Explain how Rostow's modernisation theory can be used to understand how countries develop over time. (3)

.....

.....

.....

.....

.....

.....



(d) Explain **one** advantage of using intermediate technology.

(2)

.....

.....

.....

.....

DO NOT WRITE IN THIS AREA

DO NOT WRITE IN THIS AREA

DO NOT WRITE IN THIS AREA



(e) Study Figure 5 which shows the share of total national wealth earned by five income groups from the poorest 20% to the richest 20% of the population in India and Zambia.

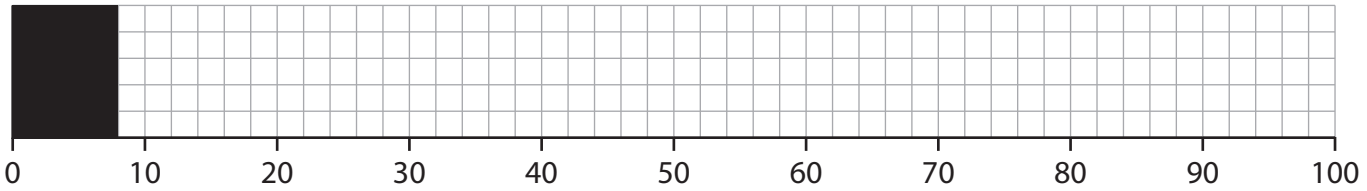
Country	Poorest 20%	Fourth 20%	Third 20%	Second 20%	Richest 20%
India (an emerging country) % share of national wealth	8	12	15	21	44
Zambia (a developing country) % share of national wealth	3	6	11	19	61

Figure 5

(i) Draw a compound bar graph using the key to show the percentage (%) share of national wealth for India using the data from Figure 5.

(3)

The poorest 20% has already been drawn for you.



Key



Poorest 20%



Fourth 20%



Third 20%



Second 20%



Richest 20%

(ii) Calculate the difference between the percentage income share of the richest and poorest 20% for Zambia.

(1)

.....%

DO NOT WRITE IN THIS AREA

DO NOT WRITE IN THIS AREA

DO NOT WRITE IN THIS AREA



- (f) Study Figure 6 which shows the Human Development Index (HDI) levels for states and federal territories in Malaysia.

Malaysian state / territory	Human development index (HDI)
Kuala Lumpur	0.822
Selangor	0.819
Penang	0.803
Melaka	0.794
Negeri Sembilan	0.789
Johor	0.785
Perak	0.778
Kedah	0.769
Perlis	0.767
Pahang	0.766
Terengganu	0.762
Labuan	0.742
Kelantan	0.741
Sarawak	0.709
Sabah	0.674

Figure 6

- (i) Calculate the interquartile range of HDI scores given in Figure 6.
Show your working.

(2)



(ii) Describe another suitable data presentation technique that could be used to display the differences in HDI data shown in Figure 6.

(2)

.....

.....

.....

.....

(g) Explain **two** ways economic development can lead to water pollution.

(4)

1

.....

.....

.....

2

.....

.....

.....

DO NOT WRITE IN THIS AREA

DO NOT WRITE IN THIS AREA

DO NOT WRITE IN THIS AREA



P 6 1 8 7 9 A 0 1 5 2 8

In this question, up to four additional marks will be awarded for your spelling, punctuation, grammar and use of specialist terminology.

(h) For a named emerging country, evaluate the role of transnational corporations (TNCs) in its development.

(8)

Named emerging country

DO NOT WRITE IN THIS AREA

DO NOT WRITE IN THIS AREA

DO NOT WRITE IN THIS AREA



DO NOT WRITE IN THIS AREA

DO NOT WRITE IN THIS AREA

DO NOT WRITE IN THIS AREA

.....

.....

.....

.....

.....

.....

(Total for spelling, punctuation, grammar and use of specialist technology = 4 marks)
(Total for Question 2 = 34 marks)

TOTAL FOR SECTION B = 34 MARKS



SECTION C

Challenges of an Urbanising World

Answer ALL questions in this section.

Write your answers in the spaces provided.

Some questions must be answered with a cross in a box ☒. If you change your mind about an answer, put a line through the box ☒ and then mark your new answer with a cross ☒.

3 (a) (i) Identify which **one** of the following is a definition of urban primacy. (1)

- A** A city with a population of over 1 million people
- B** A city which is experiencing de-industrialisation
- C** A city with a much larger influence than the other cities in the country
- D** A city which is dominated by industries such as mining and fishing

(ii) Define the term **megacity**. (1)

DO NOT WRITE IN THIS AREA

DO NOT WRITE IN THIS AREA

DO NOT WRITE IN THIS AREA



- (b) Study Figure 7 which shows data about the urban populations of selected African countries.

Country	Annual rate of growth of urban population (%)	Percentage of population which is urban
Angola	4.32	65.5
Burkina Faso	4.99	29.4
Burundi	5.68	13.0
Eritrea	3.86	40.1
Mali	4.86	42.4
South Africa	1.97	66.4

Figure 7

- (i) Calculate the mean annual rate of growth of urban population.

Give your answer to one decimal place.

Show your working.

(2)

.....%

- (ii) Suggest **one** reason for the differences in the annual rate of growth of urban population shown in Figure 7.

(2)

.....

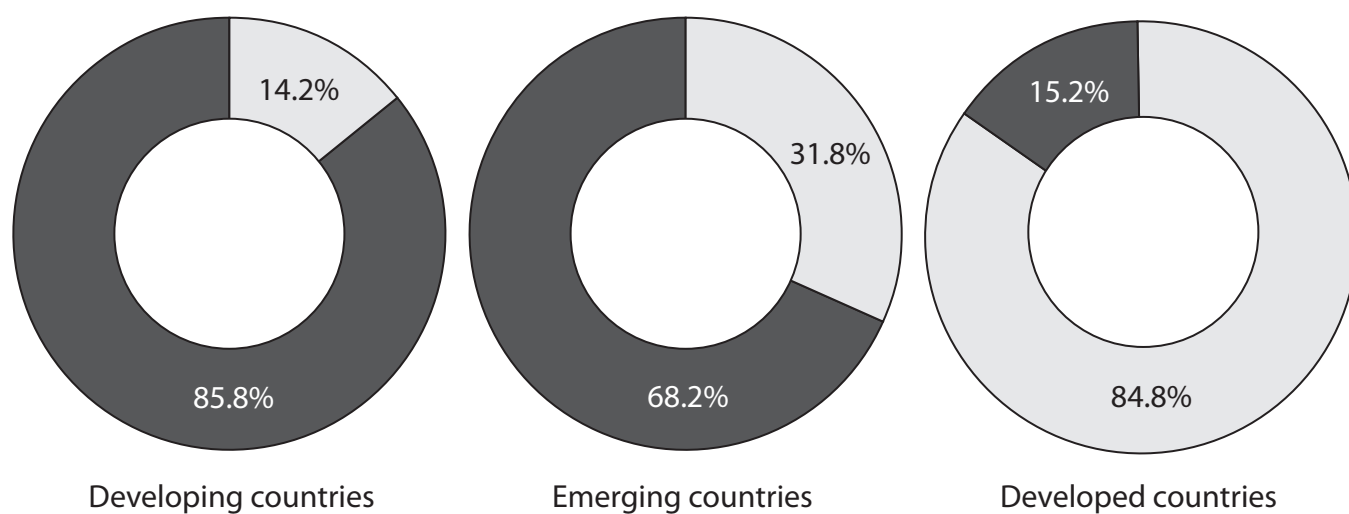
.....

.....

.....



(c) Study Figure 8 which shows variations in the type of employment for countries at different levels of development.



Key



Formal employment



Informal employment

Figure 8

(i) Identify **one** characteristic of formal employment.

(1)

- A** jobs do not have a weekly regular wage
- B** workers pay taxes on their earnings
- C** workers have little income protection if they fall sick
- D** jobs often involve working irregular hours

(ii) Calculate the difference between the percentage (%) employed in the formal sector in developed and developing countries using Figure 8.

(1)

.....%



(iii) Explain **two** reasons why there is a high percentage of people working in informal employment in cities in developing countries.

(4)

1

.....

.....

.....

.....

.....

2

.....

.....

.....

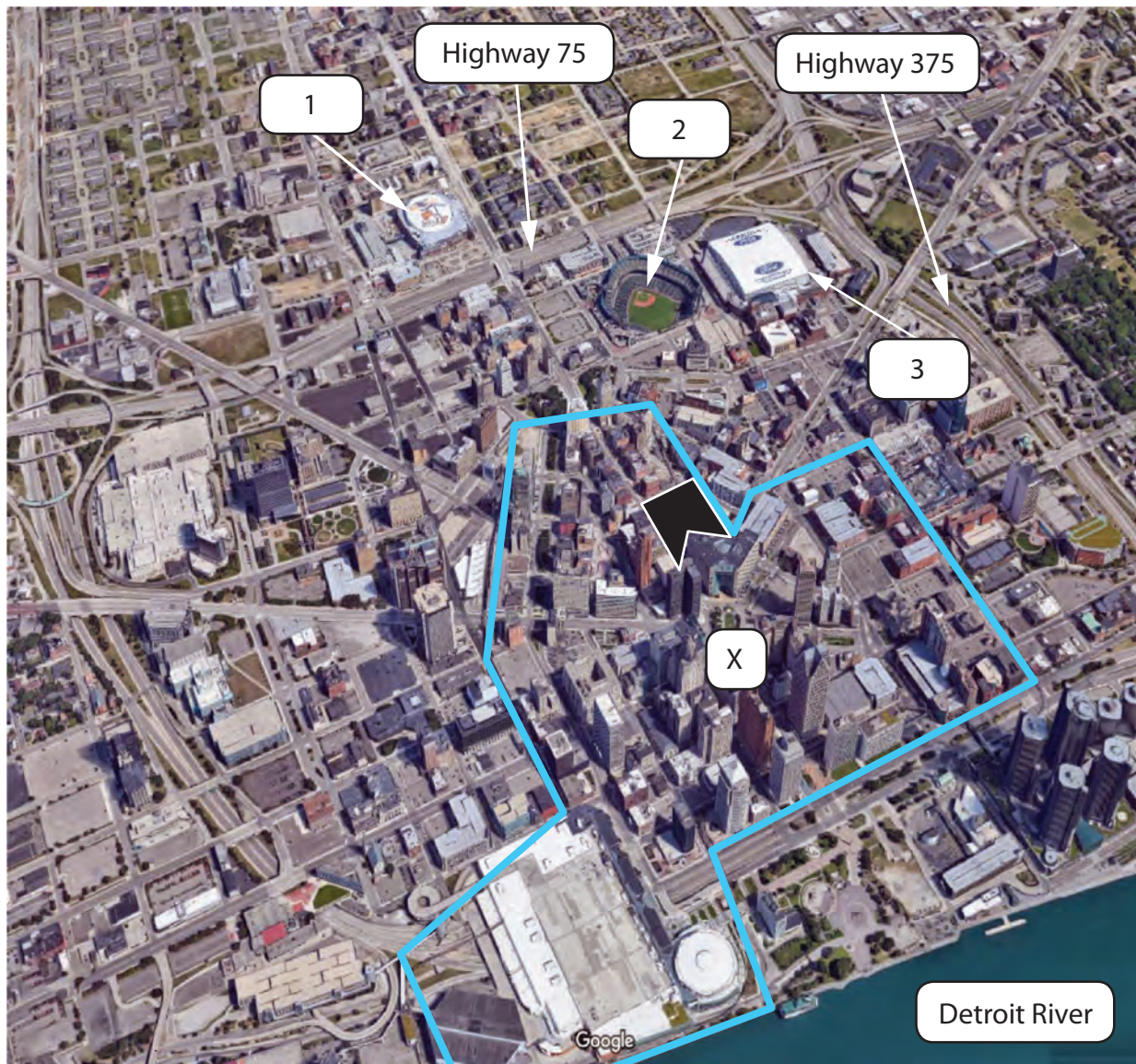
DO NOT WRITE IN THIS AREA

DO NOT WRITE IN THIS AREA

DO NOT WRITE IN THIS AREA




(d) Study Figure 9 which shows a satellite image of Detroit, USA.



Key

 The boundary of Central Business District (CBD) and route of the Detroit People Mover train system

 Hudson's redevelopment site

 Sporting facilities

0 150 m



Figure 9



DO NOT WRITE IN THIS AREA

DO NOT WRITE IN THIS AREA

DO NOT WRITE IN THIS AREA

- (i) Identify the main type of land use shown in Figure 9 at location X. (1)
- A residential
 - B industrial
 - C commercial
 - D transport

(ii) Describe the distribution of sports facilities in this area. (2)

.....

.....

.....

.....

(iii) Suggest **two** reasons why the Hudson's redevelopment site may be attractive for future development. (4)

1

.....

.....

.....

2

.....

.....

.....



(e) For a named megacity, explain **one** way its location has influenced its growth. (3)

Named megacity

.....
.....
.....
.....
.....
.....

(f) For a named megacity in either a developing or an emerging country, assess the reasons why the quality of life varies so much. (8)

Named megacity

.....
.....
.....
.....
.....
.....
.....
.....
.....
.....
.....
.....
.....
.....
.....
.....
.....
.....
.....
.....
.....
.....
.....

DO NOT WRITE IN THIS AREA

DO NOT WRITE IN THIS AREA

DO NOT WRITE IN THIS AREA



DO NOT WRITE IN THIS AREA

DO NOT WRITE IN THIS AREA

DO NOT WRITE IN THIS AREA

Area with horizontal dotted lines for writing.

(Total for Question 3 = 30 marks)

TOTAL FOR SECTION C = 30 MARKS
TOTAL FOR PAPER = 94 MARKS



DO NOT WRITE IN THIS AREA

DO NOT WRITE IN THIS AREA

DO NOT WRITE IN THIS AREA

BLANK PAGE



DO NOT WRITE IN THIS AREA

DO NOT WRITE IN THIS AREA

DO NOT WRITE IN THIS AREA

BLANK PAGE



DO NOT WRITE IN THIS AREA

DO NOT WRITE IN THIS AREA

DO NOT WRITE IN THIS AREA

BLANK PAGE

